

REFUELLING PROCEDURE

BEFORE REFUELLING

1

YOU MUST BE INDUCTED TO USE

<http://induction.wafuels.com.au>

2

THERE MUST BE TWO PEOPLE ABLE TO COMPLETE THE REFUELLING

Someone needs to be able to shut off the dispenser and hit the emergency stop in an emergency.

3

MOOR THE VESSEL SECURELY AND MOTOR OFF

Only vessels secured directly to the jetty are permitted to refuel.

4

ENSURE ANY SWELL WILL NOT RISK YOUR SAFETY

Being able to act quick on/off your vessel and will not risk spillage from a tank with excessive movement.

5

ENSURE THERE ARE NO SOURCES OF FIRE

Such as cigarettes and naked flames, loose wires and exposed batteries.

6

DETERMINE VOLUME TO BE PUMPED INTO YOUR TANK

Ensure it will not exceed your safe fill limit. You will need to select a dollar value to authorise to gain this desired volume a dollar value is $\text{Volume} \times \text{cents per litre} = \text{approx. value needed to authorise}$.

7

CHECK DAMAGE

Ensure no damage to the dispenser and hoses where moored at and no signs of leaks or spills

8

ENSURE FIREFIGHTING EQUIPMENT IS AVAILABLE

Both your equipment on your vessel and the equipment on the jetty

9

LOCATE EMERGENCY STOP BUTTON

Only use in an emergency, you can stop your dispenser by hitting the nozzle flap on it.

10

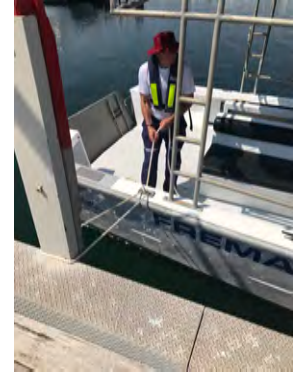
HAVE MEASURES IN PLACE TO CONTAIN SPILLAGE

Contain spillage at fill point and breathers on your vessel

11

WEAR PPE

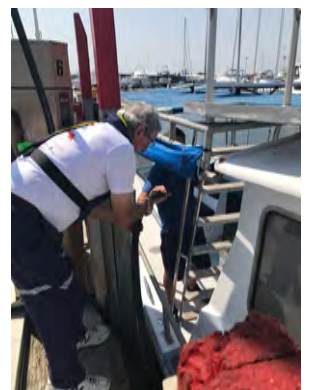
Wear personal protective Equipment to protect yourself from the harmful effects of petroleum products, glasses are highly recommended



Moor securely



Engine off!



It is a two person job

REFUELLING PROCEDURE

DURING REFUELLING

1

DO NOT JAM FUEL TRIGGER OPEN

2

KEEP CONTACT WITH THE FILL PIPE AND NOZZLE TO AVOID STATIC

3

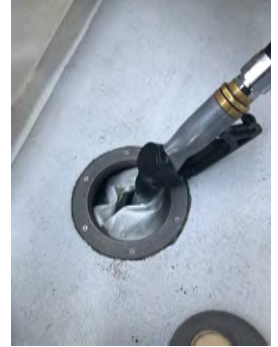
MONITOR LITERS DISPENSED TO ENSURE NO OVERFILLS

4

ENSURE A PERSON IS ABLE TO ACCESS EMERGENCY STOP

5

STOP DISPENSING



Have measures in place to contain spillage

AFTER REFUELLING

1

LIFT THE HOSE TO DRAIN FUEL INTO YOUR TANK

Ensure the you do not re press the nozzle.

2

HANG UP NOZZLE AND CLEAN UP ANY MINOR SPILLS

3

BE AWARE OF FUMES

Spills into a vessel may produce fumes that linger in lower areas of the vessel.

EMERGENCY CONTACT LIST

THE HARBOUR MASTER MUST BE CALLED FOR ASSISTANCE

0433 024 790
FSC ONLY

	PHONE
EMERGENCY POLICE/FIRE/AMBULANCE	000
FUEL EMERGENCY	08 6333 1832
WATER POLICE	131 444
DEPARTMENT OF TRANSPORT POLLUTION EMERGENCY RESPONSE	08 9480 9924
WA FUEL SUPPLIES	08 9468 7338